

# WELCOME TO THE SWEPSON

## GETTING TO THE SWEPSON

- Address: 1236 South Shelby St. Louisville, KY 40222
- The Swebson is a three-story brick building with a gold and black facade and frosted glass windows.
- Arriving on Shelby St (one way), take a right into the parking lot of the Chase Bank.



*(Front view of The Swebson)*



*(View of The Swebson from down the street)*

## PARKING AT CHASE BANK

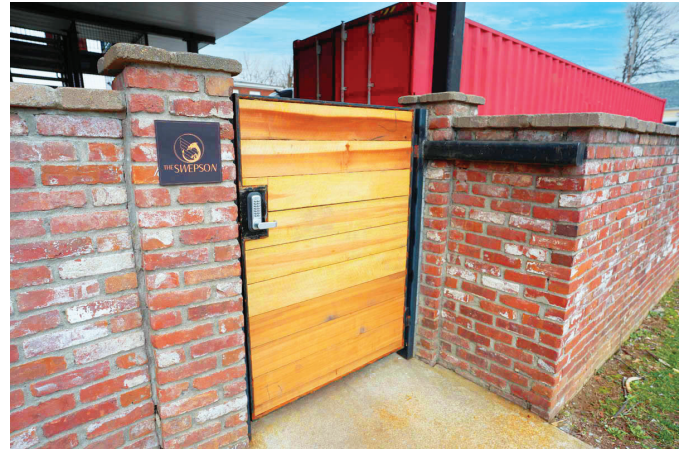
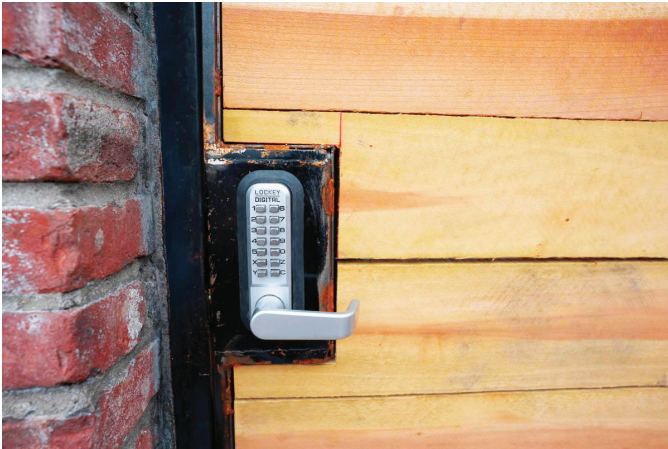


- Once in the parking lot, stay left towards the three-story brick building.
- Park in a spot close to the building near the side man gate, under the decks (*where the red car is in the photo*).
- This parking lot is where you will park during your stay. Your car is safe there overnight!

# WELCOME TO THE SWEPSON

## ENTERING THE MAIN GATE

- The Main Gate is off of the Chase Parking lot



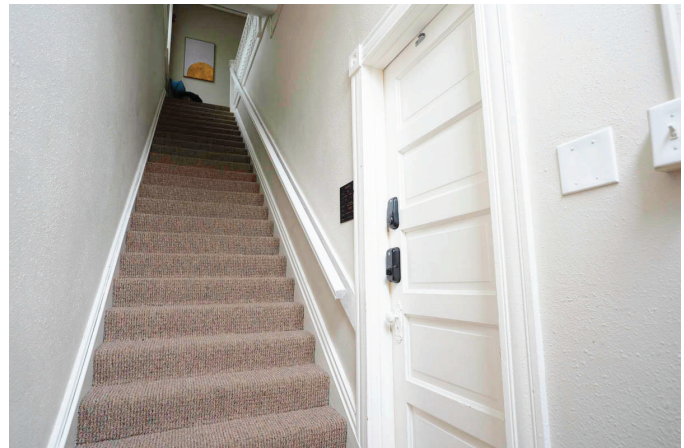
## LOCATING THE GUESTHOUSE



- Once through the main gate from the parking lot, there are two black exterior doors on the first floor for entry.
- There is also external access to each floor by the black metal staircase. *(There are also interior staircases that can be used from the first floor to the second floor.)*
- Please keep the glass front doors locked and do not use them for entry and exit unless there is an emergency.
- You have access to the whole building!



(View of exterior metal staircase)



(View of interior staircase)